

Manifold

MHU



Description

The manifold can be used for both supply and exhaust air. It is available in several types and dimensions.

The manifolds are designed for floor installation but can be used at other locations as well.

All types have couplings with Lindab safe sealings for connections of SR spiral-seamed ducts or semiflexible ducts LFPE. Use the transition piece RCFU, with Smart Lock function, to connect the LFPE 76/90-dimension to InDomo manifolds and plenum boxes with Ø80 mm couplings.

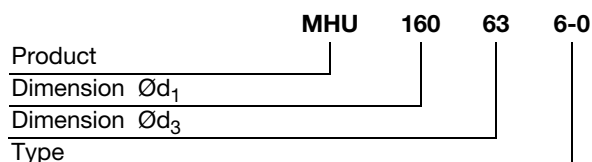
Boxes with Ø 76 couplings with Lindab safe sealings is intended for direct connection of the semiflexible duct LFPE 76/90. It is not intended for SR spiral-seamed duct.

The Smart Lock function allows you to fasten LFPE effortlessly to the Safe couplings.

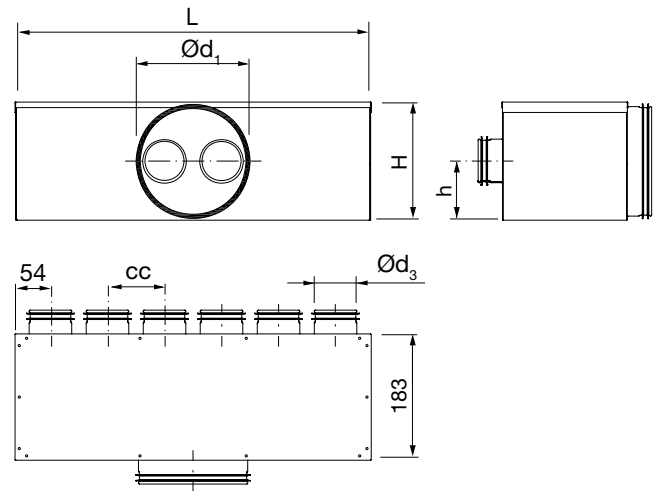
Two turnable anchor plates, placed on the bottom of the manifold, can be used for fixation.

Fulfills air tightness class D.

Ordering example



Dimensions

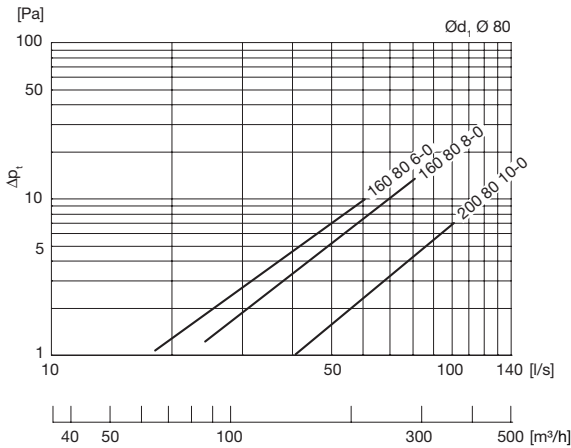
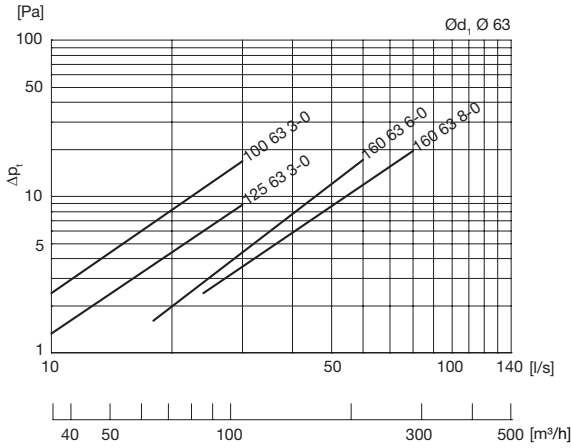


Ød ₁ nom	Ød ₃ nom	Type	L mm	H mm	h mm	cc mm	m kg
100	63	3-0	270	138	85	83	1,50
125	63	3-0	270	138	85	83	1,40
160	63	6-0	518	173	85	83	2,80
160	63	8-0	685	173	85	83	3,30
160	76	6-0	620	173	85	100	3,00
160	76	8-0	820	173	85	100	4,00
160	80	6-0	620	173	85	100	3,00
160	80	8-0	820	173	85	100	4,00
200	76	10-0	1020	213	105	100	5,00
200	80	10-0	1020	213	105	100	5,00

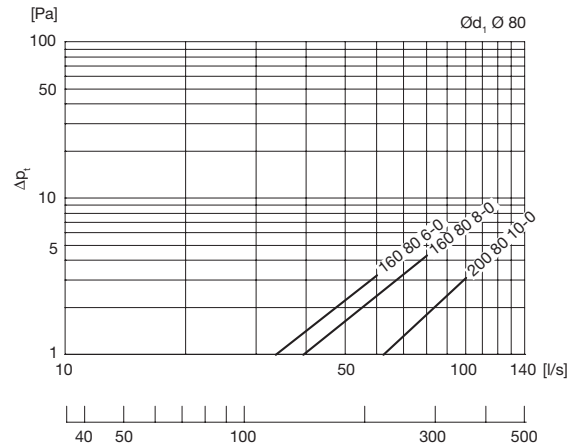
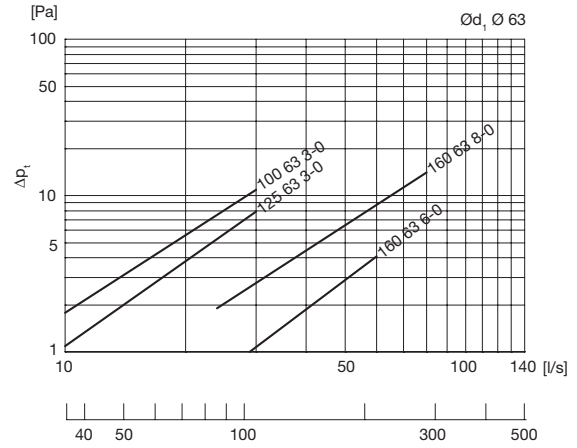
Manifold

Technical data

Supply



Exhaust



- 1
- 2
- 3
- 4
- 5
- 6
- 7
- 8
- 9
- 10
- 11
- 12
- 13
- 14
- 15
- 16
- 17
- 18